





Site Plan







Keyplan

TYPE - A
2 BHK
(2nd to 10th floor)
Area - 1126 sq.ft.

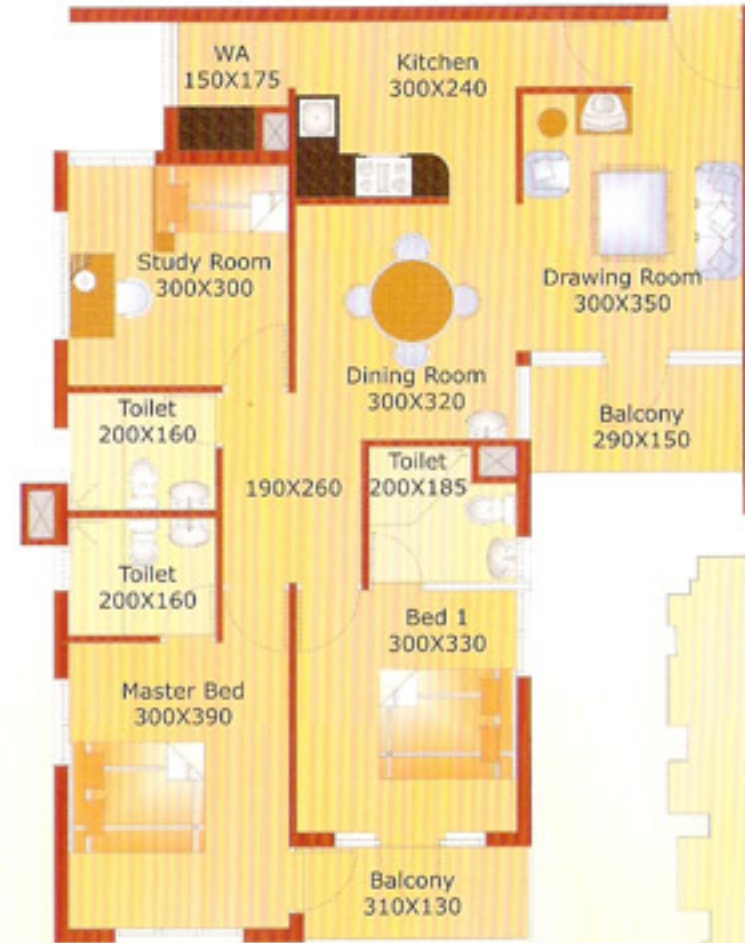
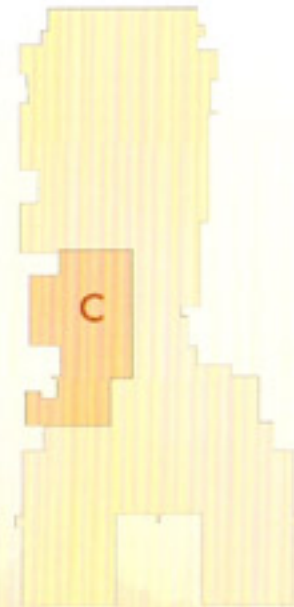


Keyplan

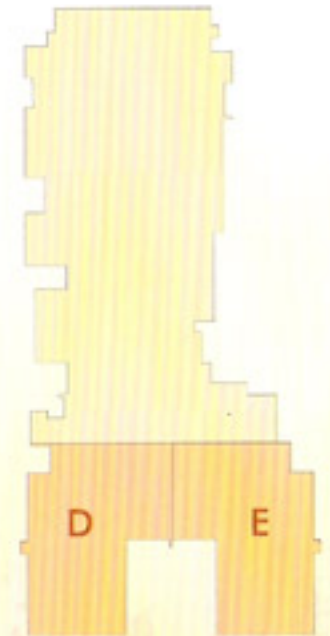
TYPE - B
3 BHK
(2nd to 10th floor)
Area: 1403 sq.ft.



TYPE - C
2 BHK
 (1st to 10th Floor)
 Area - 952 Sq.Ft.



TYPE - D & E
3 BHK
 (1st to 10th Floor)
 Area - 1333 Sq.Ft.



Tower - I



TYPE - F
3 BHK
 (11th Floor)
 Area - 1581 Sq.Ft.
 Terrace Area: 521 Sq. Ft.



Keyplan



TYPE - F
3 BHK
 (12th to 14th floor)
 Area - 1581 Sq.Ft.

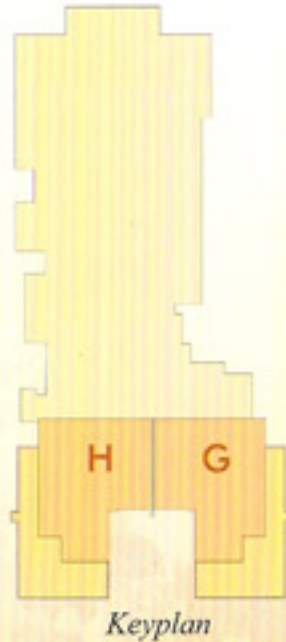


Keyplan





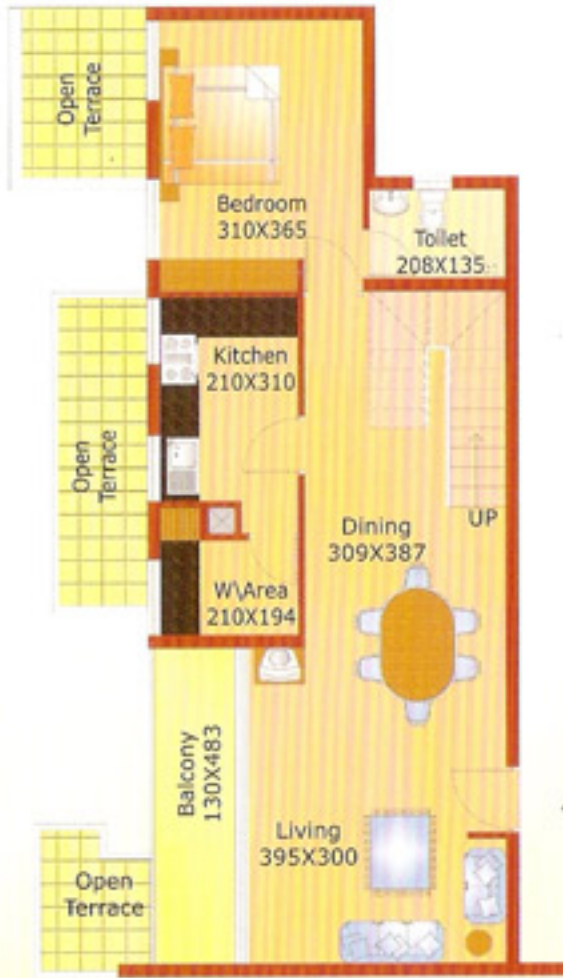
TYPE - G & H
3 BHK
 (11th floor)
 Area - 1666 Sq.Ft.
 Terrace Area: 352 Sq. Ft.
 [Duplex 1st Level]



TYPE - G & H
 (12th floor)
 [Duplex 2nd Level]



Tower - I



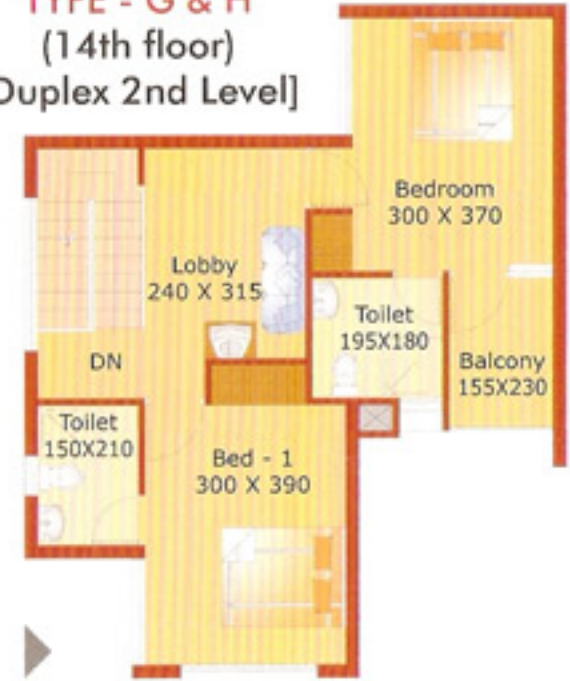
TYPE - J
3 BHK
 (11th Floor)
 Area - 2102 Sq.Ft.
 Terrace Area: 181
 [Duplex 1st Level]



TYPE - J
(12th Floor)
 [Duplex 2nd Level]



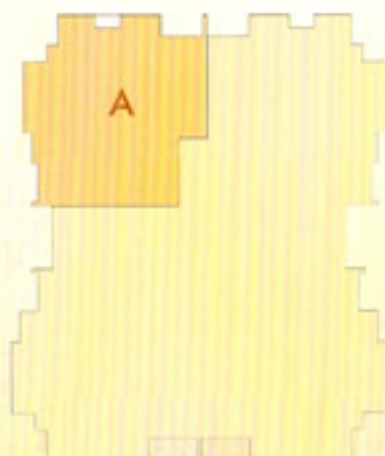
TYPE - G & H
(14th floor)
 [Duplex 2nd Level]



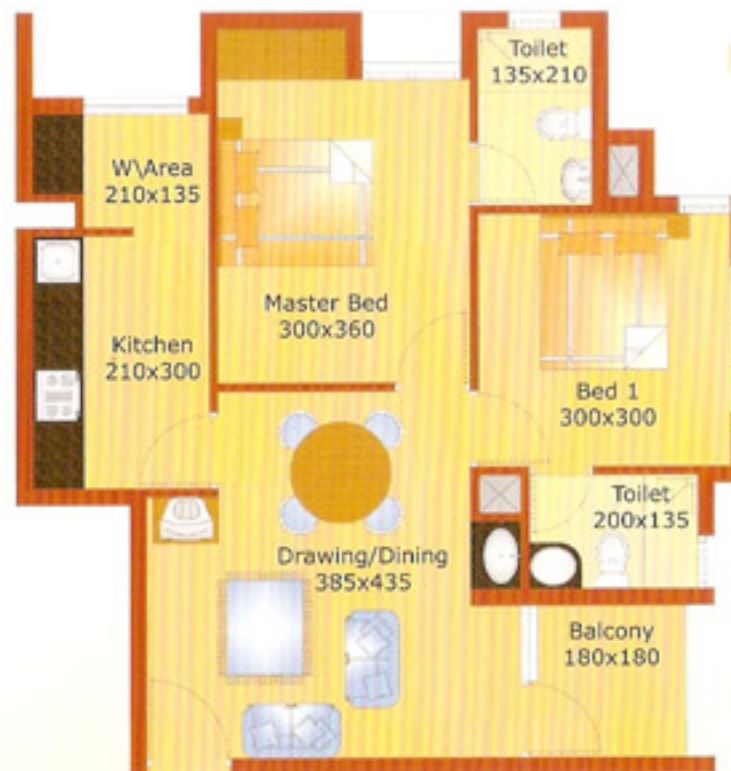
TYPE - G & H
3 BHK
 (13th floor)
 Area - 1666 Sq.Ft.
 Terrace Area: 352 Sq. Ft.
 [Duplex 1st Level]



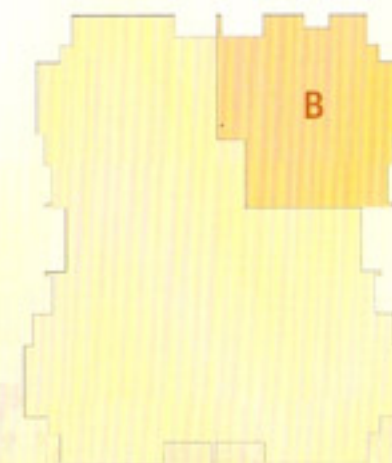
TYPE - A
2 BHK
 (1st to 11th floor)
 Area - 882 sq.ft.



Keyplan



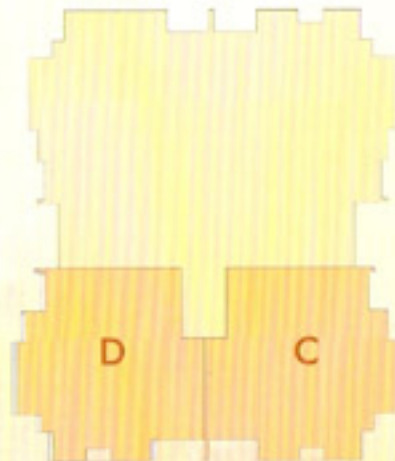
TYPE - B
2 BHK
 (1st to 11th floor)
 Area - 909 sq.ft.



Keyplan

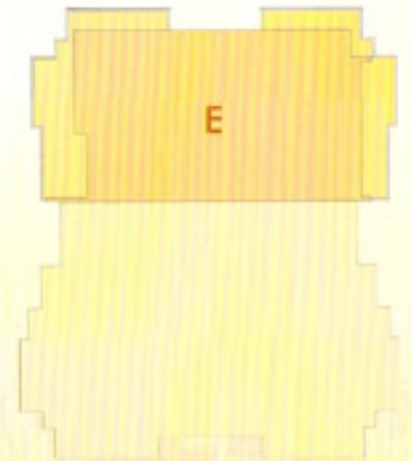


TYPE - C & D
 2 BHK
 (2nd to 11th floor)
 Area - 909 sq. ft.



Keyplan

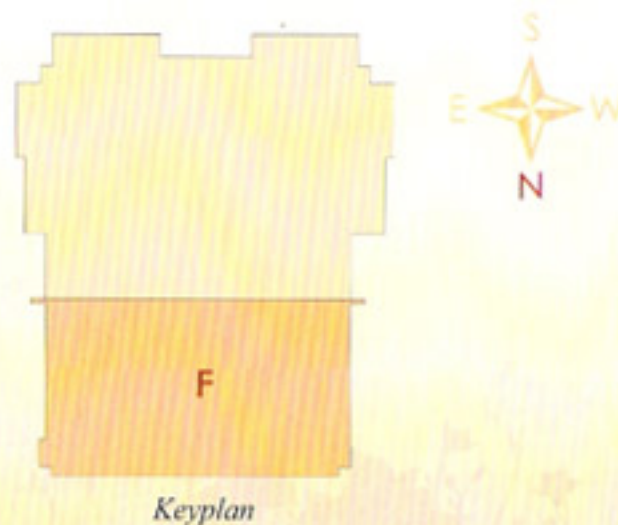
TYPE - E
 3 BHK
 (12th floor)
 Area - 1353 sq.ft.
 Terrace Area - 421 sq.ft.



Keyplan



TYPE - F
3 BHK
(13th to 15th floor)
Area - 1424 sq. ft.



Amenities

- Club House with TV lounge
- Multi Gym
- Indoor Games with Table Tennis/Snooker
- Children's play area
- 24 hours security & power back
- Joggers Track
- Covered Car Parking

Specifications

Foundation & Structure:

Suitable Foundation and RCC framed structure. Good quality country burnt bricks, plastered to cement mortar.

Flooring:

Vitrified tiles for living and dining rooms, joint free ceramic tiles for rest of the apartment, granite or vitrified tiles for the main lobby at ground floor and marble or vitrified flooring for passages.

Kitchen:

Kitchen counter with granite top and stainless steel sink. Ceramic wall tiles above the counter to a height of 60 cms.

Toilets:

Ceramic floor tiles and wall tiles up to a height of 210 cms. Concealed plumbing with provision for geyser, quality sanitary fixtures and CP fittings.

Doors & Windows:

Teak wood front door and moulded internal doors. Powder coated aluminium windows with glazed shutters.

Painting:

Putty finished internal walls with emulsion. Weather shield or equivalent for external walls. Enamel paint for internal doors and stained front door.

Electrical:

Three phase power supply with concealed conduit wiring controlled by ELCB and MCBs. Good quality modular switches.

Lifts:

2 Nos. – One passenger lift and a service lift.

Fire Fighting System:

As per government norms.

Generator:

At designated points in apartments. Power back up for lifts, common lighting and pumps.

Telephone/Cable/Internet:

Points available in living room and master bed room.

Water supply:

Water through sump and overhead tank.





Alukkas Builders and Developers Pvt. Ltd.

A unit of Anto Alukkas Group

Gosaikunnu, Kuriachira, Ernakulam Road, Thrissur - 680 006, Kerala, India. +91 487 2252511/202, Fax: +91 487 2254185, Email: alukkasbuilders@gmail.com

Call: +91 9447 5555 66, 9447 5555 99, www.alukkasbuilders.com